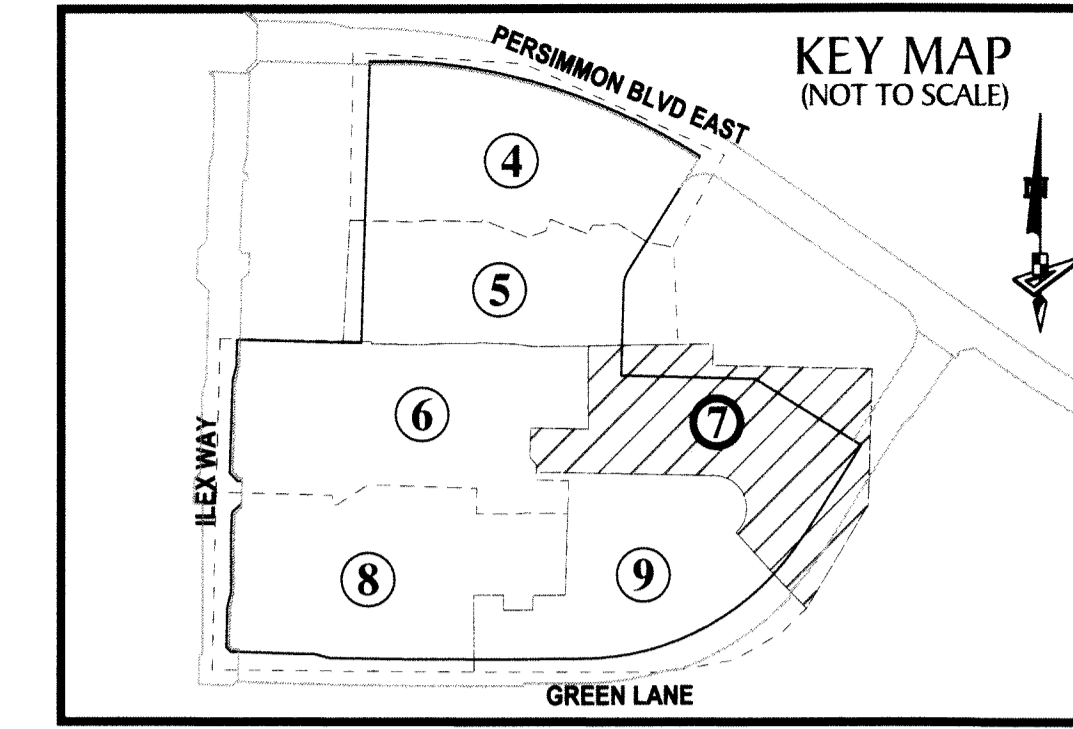
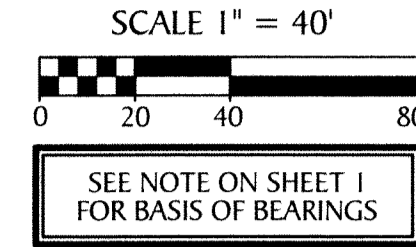
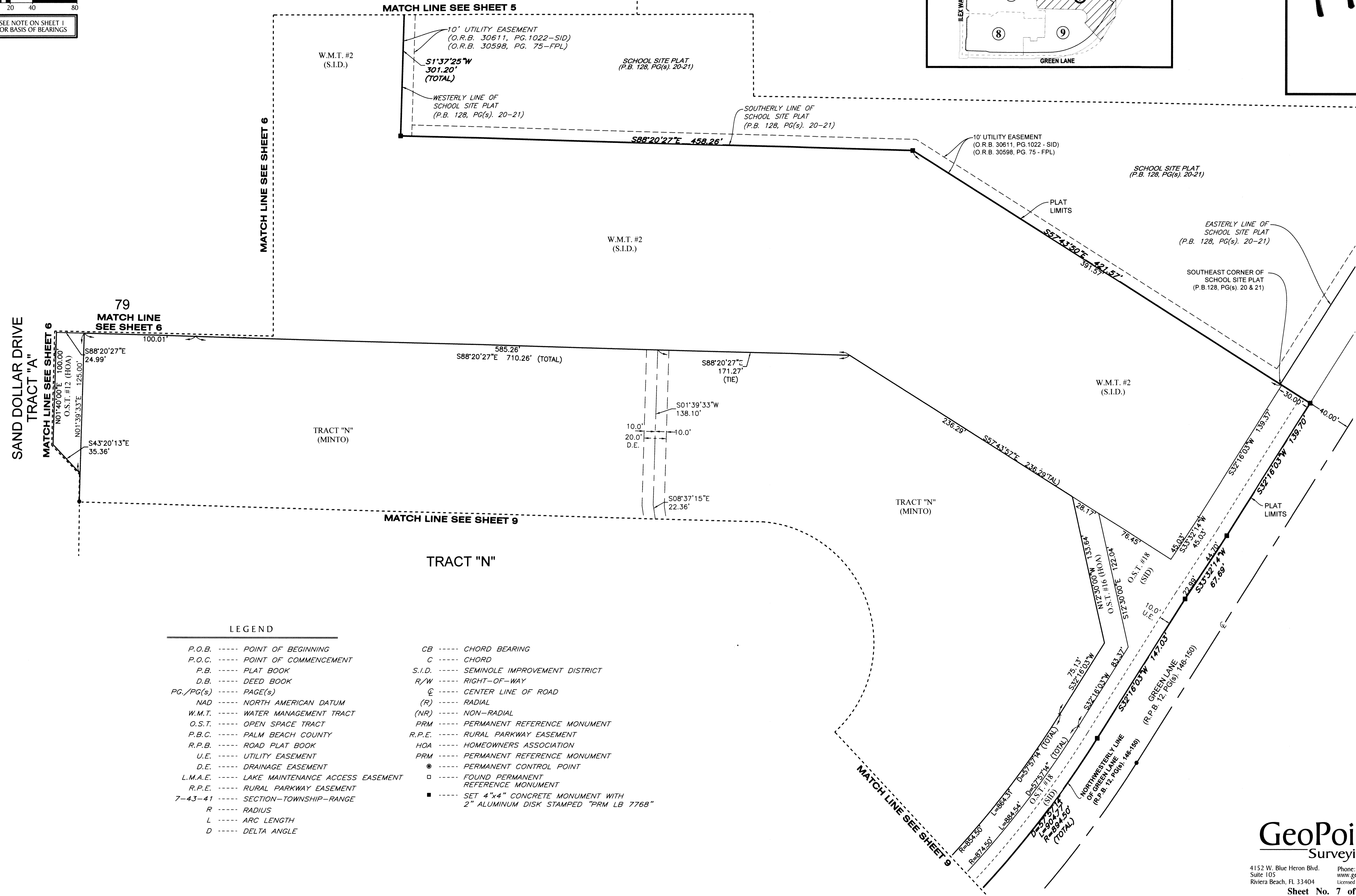


SKY COVE SOUTH - PHASE 1 A

BEING A REPLAT OF A PORTION OF OPEN SPACE TRACT #1 AND ALL OF OPEN SPACE TRACT #2, ILEX WAY PHASE II, PLAT BOOK 128, PAGES 22 THROUGH 25, INCLUSIVE, AND A PORTION OF OPEN SPACE TRACT #1, PERSIMMON BOULEVARD EAST - PLAT 2, PLAT BOOK 128, PAGES 16 THROUGH 19, INCLUSIVE, BOTH OF THE PUBLIC RECORDS OF PALM BEACH COUNTY, FLORIDA, TOGETHER WITH A PORTION OF SECTION 12, TOWNSHIP 43 SOUTH, RANGE 40 EAST, CITY OF WESTLAKE, PALM BEACH COUNTY, FLORIDA,



176



LEGEND

- | | |
|---|---|
| P.O.B. ----- POINT OF BEGINNING | CB ----- CHORD BEARING |
| P.O.C. ----- POINT OF COMMENCEMENT | C ----- CHORD |
| P.B. ----- PLAT BOOK | S.I.D. ----- SEMINOLE IMPROVEMENT DISTRICT |
| D.B. ----- DEED BOOK | R/W ----- RIGHT-OF-WAY |
| PG./PG(s) ----- PAGE(S) | CL ----- CENTER LINE OF ROAD |
| NAD ----- NORTH AMERICAN DATUM | (R) ----- RADIAL |
| W.M.T. ----- WATER MANAGEMENT TRACT | (NR) ----- NON-RADIAL |
| O.S.T. ----- OPEN SPACE TRACT | PRM ----- PERMANENT REFERENCE MONUMENT |
| P.B.C. ----- PALM BEACH COUNTY | R.P.E. ----- RURAL PARKWAY EASEMENT |
| R.P.B. ----- ROAD PLAT BOOK | HOA ----- HOMEOWNERS ASSOCIATION |
| U.E. ----- UTILITY EASEMENT | PRM ----- PERMANENT REFERENCE MONUMENT |
| D.E. ----- DRAINAGE EASEMENT | ● ----- PERMANENT CONTROL POINT |
| L.M.A.E. ----- LAKE MAINTENANCE ACCESS EASEMENT | □ ----- FOUND PERMANENT REFERENCE MONUMENT |
| R.P.E. ----- RURAL PARKWAY EASEMENT | ■ ----- SET 4"x4" CONCRETE MONUMENT WITH 2" ALUMINUM DISK STAMPED "PRM LB 7768" |
| 7-43-41 ----- SECTION-TOWNSHIP-RANGE | |
| R ----- RADIUS | |
| L ----- ARC LENGTH | |
| D ----- DELTA ANGLE | |